

Pipeline Monthly

VP TECHNICAL REPORT

ANTHONY WICKUM, VP TECHNICAL

As an ASPE board member and volunteer and for many years now I am still very happy to serve the engineers in their continuing education. We have many interesting topics this year to help all of the local members specifically. We plan to host the first three meeting as Webinar only. We hope next year to host an in-person meeting and broadcasting the meeting for those who would prefer to login.

We have been fortunate to have many board members who have been able to volunteer for many years. I can't say enough to the opportunities volunteering for ASPE has given me. Not to mention the friendships through the years. I hope to ramp up the engineering presence in the meeting and Board positions, if anyone is interested in volunteering for a board position and we are happy to discuss the benefits.

If there are topics you would like to see please contact me and I am more than happy to find the best presenter on the topic.

Anthony Wikum awikum@dawsonco.com
Dawson Company - Business Development Group

<http://sections.asce.org/sandiego/home>
<https://ashraesd.org/>
Anthony Wikum

2019-2021 Chapter Officers

President
Grant Schaffer
husker92592@gmail.com

V.P. Technical
Anthony Wikum
awikum@dawsonco.com

V.P. Legislative
Juan Contreras
jacontreras1964@yahoo.com

V.P. Membership
Chrissy Hamm
chrissyk@specsales.com

Treasurer
Rod Koepke
rkoepke@syska.com

Administrative Secretary
Liza Cusimano
lcusimano@treisd.com

Corresponding Secretary
Anthony Simpson
asimpson@delcosales.com

ASPE SD Affiliate
Martin Trim
Martin@barrettump.com

Inside this issue

Technical Report	1
President Report	2
Membership Report	6
CPD Testing	4
ASPE SD GOLF.....	12
Covid 19	15
ASPE SD BALLOT.....	8

Special points of interest

- CPD Testing
- Covid 19 Update
- National Convention

BARRETT

Engineered Pumps

Specialists in pumps & pumping systems

1695 National Avenue
San Diego, CA 92113
(619) 232-7867
FAX (619) 232-3029
www.barrettump.com

Pumps

Parts

Service

Repair



REPRESENTING

Variable Speed pumping systems. Multi stage pumps & circulating pumps, dosing pumps and systems.
www.grundfos.com

Centrifugal, vertical industrial and municipal turbine pumps, ANSI process pumps.
www.peerlessump.com

Submersible sump and sewage pumps and pumping systems.
www.femyers.com

Self-priming industrial centrifugal and rotary gear pumps.
www.gormanrupp.com

Municipal, industrial, close & flexible coupled centrifugal pumps.
www.grundfos.com.com

Municipal water and waste water pumps.
www.grundfos.com

Regenerative turbine type and centrifugal pumps.
www.cranepumps.com

HVAC end suction, split case, vertical inline centrifugal pumps.
www.aurorapump.com

Industrial, special metal pumps and domestic water systems.
www.gouldspumps.com

Severe duty recessed and heavy duty wastewater pumps.
www.grundfos.com

High pressure piston and plunger pumping units & pump sets.
www.catpumps.com

Magnetic driven seal-less chemical pumps.
www.marchump.com

Hydra-cell multi-diaphragm, low pulse positive displacement pumps.
www.hydra-cell.com

Stainless steel and bronze centrifugal industrial, marine, and sanitary pumps.
www.ampcopumps.com

Contractor, commercial, industrial cast iron & stainless steel submersible effluent & solids handling pumps & oil management controls. www.stancorpumps.com

Condensate and boiler feed pumping units.
www.rothump.com

Small industrial diaphragm pumps.
www.xylemflowcontrol.com

Pumps for ponds and fountains.
www.lg-outdoor.com

Butterfly and check valves, flexible connectors, strainers, heat exchangers, and expansion tanks and air separators.
www.wheatleyhvac.com

Commercial, industrial, municipal pump and system control panels.
www.sjerhombus.com

PRESIDENT'S REPORT

GRANT SCHAFFER ASPE SD PRESIDENT , REG. 4 NOMINATING COMMITTEE

To all Members ASPE San Diego, Its ASPE time in San Diego! We are back from summer break and well as Corona Virus uneventful it was we are still fighting the good fight and staying away. We are hoping that the end is near and hopefully by the fourth quarter we can return back to in person meetings. For now, Anthony

Wikum, our VPT has been working exceptionally hard to get us set up with ZOOM and for September we will be online. Same date and same time. ASPE National and their attempts have been successful so we here in San Diego will continue forward with the same. Please stay in touch with the website as all our past meet-

ings and information is updated there for an additional source to keep all out members updated.

Keep your eyes open for the coming months as Liza will be sending out invites for ASPE SD AYP ASPE Young Professionals gathering.

On National News, The nominating committee is finished with the National board recommendations and elections. With the non- convention coming up the business meeting will continue and the new installation of the ASPE committees and board will be instituted. On that note ASPE Technical convention 2020: Convention & Expo: September 11-16, 2020 in New Orle-

REPRESENTING:



Engineered Pumps, Hydronic, and Water Treatment Equipment



 	<ul style="list-style-type: none"> ◆ Submersible, vertical, and dry pit sewage and sump pumps ◆ Condensate return, boiler feed, and circulating pumps ◆ Submersible and vertical grinder pumps, "Slicer" pumps, "Mover" pumps, "Scum Blaster" systems, prefabricated lift stations ◆ Submersible and dry pit non-clog sewage, effluent and wastewater pumps ◆ Grinder pump cutters, jacketed pumps, and portable dewatering pumps ◆ High temperature and corrosion resistant pumps ◆ 10 GPM to over 10,000 GPM, 1/2 HP to over 500 HP Prefabricated lift stations
	<ul style="list-style-type: none"> ◆ UL- and ETL-listed packaged variable and constant speed pumping systems ◆ Domestic water, HVAC, irrigation, and fire pump packages ◆ Custom engineering and design capabilities ◆ Each system full factory-tested and warranted
	<ul style="list-style-type: none"> ◆ High performance self-priming and end suction centrifugal pumps ◆ Standard heavy-wall ductile iron volutes and 17-4 PH stainless steel shafts ◆ Shimless impeller adjustment and cartridge-type SC/TC mechanical seals
	<ul style="list-style-type: none"> ◆ Non-chemical water treatment using ozone technologies ◆ For cooling towers, lakes, fountains, aquariums, swimming pools and other open systems ◆ AquaPak™ EWS emergency water supply packages for critical facilities ◆ CleanStream™ cooling tower filtration packages
	<ul style="list-style-type: none"> ◆ Patented electroabsorptive technology for water purification and filtration ◆ Submicron particulate, pathogen, trace pharmaceutical, & cellular debris removal ◆ Much lower pressure drop, higher flow rates than comparable UF membranes ◆ Seromix Advanced Metals Removal System
	<ul style="list-style-type: none"> ◆ Packaged fire pump systems ◆ Inline, end suction and double suction circulating pumps ◆ Turbine, axial, and mixed flow pumps ◆ Vertical and horizontal multi-stage pumps
	<ul style="list-style-type: none"> ◆ PURAIN Self-Cleaning Pre-Filters for Rainwater Collection Systems ◆ AQUALOOP Graywater Treatment <ul style="list-style-type: none"> ◆ 6 Log Reduction of Bacteria (99.9999%) and 99.7% Virus Removal ◆ NSF 350 Certification ◆ DRAINMAX Tunnel Infiltration Products for On-Site Detention
	<ul style="list-style-type: none"> ◆ Pneumatic Ejectors ◆ Diaphragm Pumps ◆ Plunger Pumps
	<ul style="list-style-type: none"> ◆ Stainless steel vertical and horizontal multi-stage pumps ◆ Flows to 550 GPM, Heads to 1350 Ft., Temp to 285° F, Working Pressures to 600 PSI ◆ Cast AISI 304 or 316 stainless steel 5/D casing ◆ NSF/ANSI 61 Annex G certified
	<div style="display: flex; justify-content: space-between;"> <ul style="list-style-type: none"> ◆ HVAC specialties ◆ Triple duty valves ◆ Suction diffusers ◆ Expansion tanks <ul style="list-style-type: none"> ◆ Air separators ◆ Flex connectors ◆ Strainers ◆ Hydropneumatic tanks <ul style="list-style-type: none"> ◆ Butterfly valves ◆ Heat exchangers ◆ Flow metering devices ◆ ASME pressure vessels </div>
<h3>ACCESSORY LINES:</h3>	<ul style="list-style-type: none"> ◆ Control panels, alarms ◆ Fiberglass sump basins ◆ Level sensors ◆ Custom fabricated steel covers and frames ◆ Elevator sumps, holding tanks, and alarms

SERVING THE BUILDING TRADES SINCE 1962

115 E. Palmer Avenue, Unit C
Glendale, CA 91205-3186
www.weilaquatronics.com

Tel: 818.244.5582
Fax: 818.247.0083
info@weilaquatronics.com

CALL TOLL FREE:
800.74PUMPS
(800.747.8677)



V.P. Membership Report

Chrissy Hamm, VP Membership

San Diego ASPE chapter, we are down to 92 members. Now is the time to stay in contact with groups like ASPE to keep you current and active in the plumbing community. Keep in mind the best way to join or renew your membership is online at www.aspe.org. Please let me know if I can help answer any membership questions.

Chrissy Hamm
Specification Sales
760-427-6895

“WORK IS IMPORTANT TO ME. I WANT TO DO THINGS FOR PRINCIPLE, NOT JUST FOR THE SAKE OF DOING THEM.” ~TRACY ULLMAN~



New Representative:
Mainline Sales

**One Mission.
One Focus.
No Distractions.**

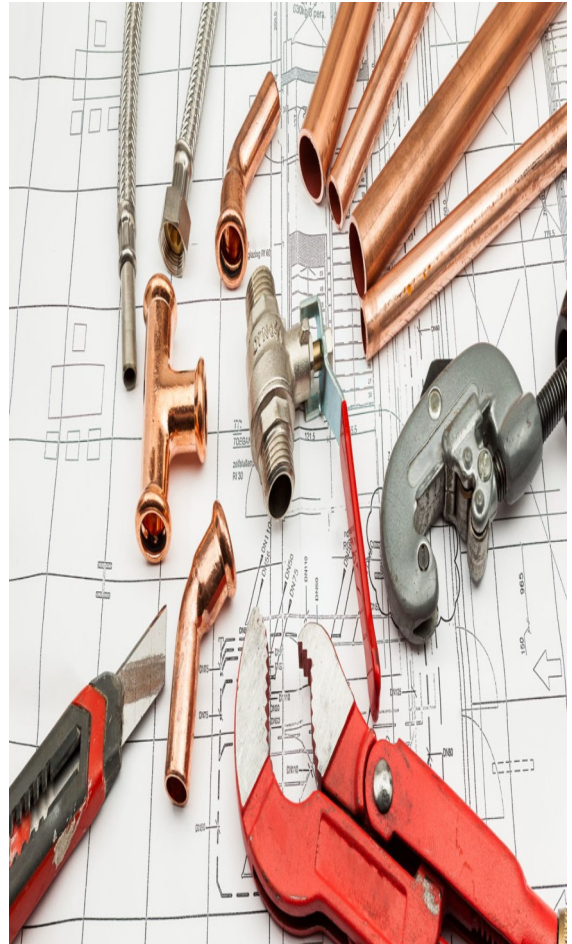
Emergency equipment isn't just what we do. **It's all we do.** Your safety is too important to entrust to just anyone. All Guardian emergency eyewash and shower products are inspected, fully assembled, and 100% water-tested in our Chicago facility, which means you receive the most reliable emergency equipment each time, every time. Your safety isn't just a priority. It's our only priority. Visit gesafety.com to learn more.

 **Guardian**
EMERGENCY EYEWASH & SHOWER TECHNOLOGY

Represented by:
Mainline Sales
(877) 300-9346

The advertisement features a magnifying glass focusing on an orange emergency eyewash and shower unit. The background is a blurred office setting with a laptop and other equipment.

TAKE CONTROL.



ASPE SD UPDATE

Due to San Diego City and County Lock down, mass gatherings for San Diegoans is still in the holding stage. Please take note to local updates for Covid 19. As we wait out this dilemma stay tuned to the ASPE SD website and the newsletter for future even holdings for the ASPE SD chapter. Currently Anthony Wikum is managing all monthly event and webinars are common place. We will let everyone know soon when we can all get back together. Thanks for the patience and stay safe.

PresidentContinued from page 3

ans, LA; 2021: has been CANCELLED, I guess sometime soon we will have another chance to enjoy the Big EASY. So far the Technical Symposium: September 21-26, 2021 in San Diego, CA; is still on track so stay tuned this next year for the Technical Symposium.

I hope every one is safe and its time to get back in the saddle for ASPE SD,

Warm regards, Grant Schaffer

ASPE San Diego President Warm regards,
Grant Schaffer

ASPE San Diego President, Region IV Nominating Committee

**If something is
wrong, fix it now.
But train yourself
not to worry, worry
fixes nothing.**

**Ernest
Hemingway**

CHOOSE YOUR PERFECT FIT

Thermostatic Balancing Valves for Domestic
Hot Water Recirculation Systems



Visit www.CircuitSolver.com/perfect-fit or call your local rep at 909-594-7088

TAKE CONTROL.



SPEC
SALES

SPECIFICATION SALES

1295 East Acacia Street
Ontario, CA 91761
909-594-7088
www.specsales.com
orders@specsales.com

Our Representation in Southern California includes the following manufacturers:



8

50
YEAR
ANNIVERSARY

San Diego ASPE Newsletter Sponsorship Rates:

Size	Member	Non-Member
Bus. Card	\$90.00	\$120.00
1/4 Page	\$135.00	\$160.00
1/2 Page	\$200.00	\$230.00
Full Page	\$360.00	\$480.00
Flyer	\$115.00	\$135.00

Contact:

Treasurer for payment
Email: rkoepke@syska.com

Checks shall be made payable to ASPE San Diego and sent to Rod Koepke at Syska Hennessy. Sponsorship art shall be sent to the newsletter editor. Please remember to send you add in a picture format such as .jpeg or .tiff files as an example.

CASPE
American Society of
Plumbing Engineers
SAN DIEGO

American Society of Plumbing Engineers
San Diego Chapter
(619) 972-7425

Local chapters do not speak for the Society.

ELECTION BALLOT 2020-2021

All positions are open. Feel free to fill in a name and vote in someone new.

President		
Grant Schaffer, LEED GA	<input type="checkbox"/>	
.....	<input type="checkbox"/>	
Vice President Technical		
Anthony Wilum (Dawson Co.)	<input type="checkbox"/>	
.....	<input type="checkbox"/>	
Vice President Legislative		
Juan Contreras (Integral Group)	<input type="checkbox"/>	
.....	<input type="checkbox"/>	
Vice President Membership		
Christy Hamm (Specification Sales)	<input type="checkbox"/>	
.....	<input type="checkbox"/>	
Treasurer		
Rod Koepke, CPD, GPD (Syska Hennessy)	<input type="checkbox"/>	
.....	<input type="checkbox"/>	
Administrative Secretary		
Liza Cusimano (Turpan & Rattan)	<input type="checkbox"/>	
.....	<input type="checkbox"/>	
Corresponding Secretary		
Anthony Simpson (Delco Sales)	<input type="checkbox"/>	
.....	<input type="checkbox"/>	

2018-2019 Board of Directors

President - Grant Schaffer
Vice President, Technical - Anthony Wilum
Vice President, Legislative - Juan Contreras
Vice President, Membership - Christy Hamm
Treasurer - Rod Koepke, CPD, GPD
Administrative Secretary - Liza Cusimano
Corresponding Secretary - Anthony Simpson

"Individual Chapters are not authorized to speak for the Society"

<https://www.aspesd.org/>

Our Representation in Southern California includes the following manufacturers:



www.advancetabco.com



www.aquamotionhvac.com



Invented for life

www.bosch-climate.us



www.erico.com



www.circuitsolver.com



www.trenchdrain.net



www.ez-flo.net



www.dorot.com



www.flexhose.com



www.hawsco.com



www.homesteadvalve.com



www.laco.com



www.legendvalve.com



www.seachrome.com



www.nventthermal.com



www.nupiamericas.com



www.quantumflo.com

DELCO SALES

Southern California

	<p>A.O. Smith Commercial & residential water heaters both gas & electric. www.hotwater.com</p>		<p>Liberty Pumps Sump, drain, effluent, sewage, and grinder pumps and pump systems. www.libertypumps.com</p>
	<p>Accor Technology The fastest, most reliable stop system for connecting faucets and toilets. www.accortechnology.com</p>		<p>Metcraft Industries Stainless steel products for correctionals, hospitals, and schools. www.metcraftindustries.com</p>
	<p>American Water Heaters Commercial & residential water heaters both gas & electric. www.americanwaterheater.com</p>		<p>Multi Fittings The widest range of injection molded fittings for waste, vent, and drains. www.mulfittings.com</p>
	<p>Tolco / B-Line Pipe hangers, seismic, and strut systems. www.cooperindustries.com/content/public/en/b-line.html</p>		<p>Oatey Washing machine & ice maker boxes, Dearborn tubular, ADA trap covers. www.oatey.com</p>
	<p>Bemis / Church Plastic, wood, and soft toilet seats for residential and commercial markets. www.bemisseats.com</p>		<p>Sloan Valve Providing smart, clean, sustainable restroom solutions and designs. www.sloan.com</p>
	<p>CTS Flange "Fully floating" copper companion flanges with electrolysis insulation. www.ctsflange.com</p>		<p>State Water Heaters Commercial & Residential water heaters both gas & electric. www.statewaterheaters.com</p>
	<p>E.A. Gray Pipe nipples available in steel, brass, plastic, aluminum, and stainless steel. www.eagray.com</p>		<p>T&S Brass Faucets, fittings, & specialty products for a wide range of markets. www.tsbrass.com</p>
	<p>Fernco High performance couplings and innovative plumbing and drainage solutions. https://www.fernco.com</p>		<p>Takagi Tankless Commercial & Residential water heaters. www.takagi.com</p>
	<p>Fox Environmental Fox washdown units. Designed to divert all your wash down water to waste. www.foxenviro.com.au/us</p>		<p>Turbo Torch Soldering and welding torches, tips, kits and accessories. www.turbotorch.com</p>
	<p>Just Manufacturing Stainless steel sinks for commercial, residential, and institutional applications. www.justmfg.com</p>		<p>Watts (family of brands) Ames - Blucher - Brae - Dormont - Orion - Powers - Watts Drainage - Watts Pure Water - Watts Regulator. www.watts.com</p>
	<p>K-FLEX USA Elastomeric closed cell insulation products that deliver reliable lasting performance. www.kflexusa.com</p>		

5375 East Hunter Avenue Anaheim, CA 92807
Phone (714) 888-2444 • Fax (714) 888-2448 • Sales@delcosales.com • www.delcosales.com



San Diego Office:

10680 Trenea Street
San Diego, CA 92131
858-368-8360 Office

866-517-3293 Fax

Focusing on Healthcare, Education, Commercial ,
Private, industrial and Process sectors



Anne Yardley Caldwell

ayardley@elmcostewart.com



9040 Carroll Way, Suite 1, San Diego, CA 92121 (800) 800-8778 p (858) 437-0117
www.elmcostewart.com

Approved for more applications than any other press system

For residential, commercial and industrial projects, Viega provides more press fitting system solutions for engineers than any other manufacturer. The Viega MegaPress® system for black iron is the only press fitting solution for both hydronic and gas applications. Viega MegaPressG approvals/listings for natural gas include UPC, CSA, ICC, TSSA and LA City Lab. Viega MegaPress approvals/listings for hydronic, fire protection and compressed air systems include UMC, UL, FM, ICC and TSSA. Viega also offers the first press fitting for PEX. Approved in the City of LA, Viega PEX Press fittings provide secure connections and a guaranteed method to identify unpressed connections, the Viega Smart Connect® feature.

Contact your local Viega representative to learn more:

David Carneal - david.carneal@viega.us



1-800-976-9819 | www.viega.us



"Individual Chapters are not authorized to speak for the Society"
<https://www.aspcsd.org/>

Advancing the Profession of Plumbing Engineering

ASPE is the international organization for professionals skilled in the design, specification, inspection and manufacture of plumbing systems.

Covid 19 Update

UPDATE ON ASPE OPERATIONS DUE TO THE CORONAVIRUS (COVID-19) PANDEMIC

<https://www.aspe.org/blog/update-on-aspe-operations-due-to-the-coronavirus-covid-19-pandemic/>

“Considering the continuing novel coronavirus (COVID-19) pandemic, and the current environment in which we live and work, ASPE is taking additional steps in protecting the health, welfare, and safety of our members, partners, and staff. During this time of working remotely and “social distancing,” the best way to communicate with staff is via email. You can find everyone’s email addresses here: [aspe.org/about/staff](https://www.aspe.org/about/staff). ASPE staff has developed a proactive guidance webpage with resources to help address many of the needs and concerns of our members: [aspe.org/coronavirus-covid-19-preparedness-resources](https://www.aspe.org/coronavirus-covid-19-preparedness-resources).

Billy Smith, FASPE, ASPE Executive Director/CEO”

ASPE San Diego Chapter

Primary Business Address

Your Address Line 2

Your Address Line 3

Your Address Line 4

Phone: 555-555-5555

Fax: 555-555-5555

E-mail: someone@example.com



Mailing Address Line 1

Mailing Address Line 2

Mailing Address Line 3

Mailing Address Line 4

Mailing Address Line 5